

PERFECT COMFORT
FOR PERFECT HOMES



We undertake this opportunity to introduce ourselves as one of the fastest growing Lift Company in India with latest highly advanced Global Technology of Micro Controller based Control Panel with Serial Communication System “developed indigenously”. At our factory in South India, we have equipped unmatched manufacturing and technological infrastructure including testing arrangements with computer controlled machines, which ensure the reliability of the equipment installed by us. We hope that our offer will be in line with your requirements and, wait for your valuable call to furnish further details. Thanking you and assuring the best of our services at all the time.





NO MACHINE ROOM



GEARLESS



LOW NOISE



COMPACT DESIGN

JE Gearless Machines for Home Elevators

- The new GreenStar Mini simplifies vertical mobility inside your home.
- Travel comfortably to every floor.
- Give elderly and dependent people the freedom to move from floor to floor without using the stairs.
- GreenStar Mini is a Gearless PMSM machine, ideal for loads up to 300 kg and travel up to 15 meters.
- GreenStar Mini is compact and facilitates elevators with a minimum of space and civil work.
- GreenStar Mini operates on single-phase 230V domestic power supply.
- GreenStar Mini is silent, it uses no oil, reduces power consumption and is also eco-friendly.
- Unique design and layout permit entrances from three sides.



SPECIFICATIONS

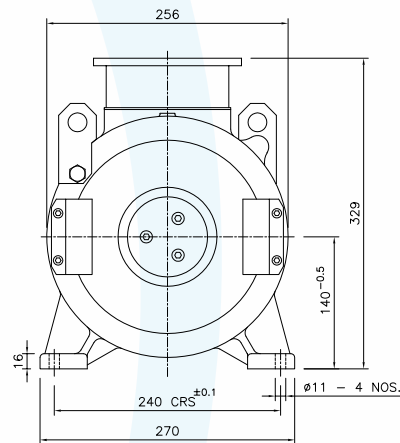
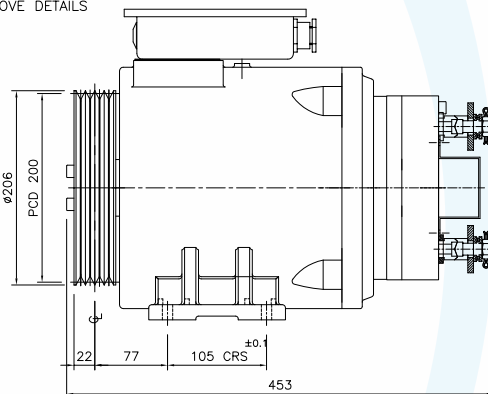
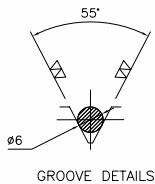
HOME LIFT MACHINE

Model No.	Duty Load (Kg.)	Equivalent Pass. Capacity (Nos.) Up To	Speed (m/s)	Roping	No. of Ropes	Rope Dia. (mm)	Pulley Dia. (mm)	Nominal consumption (A)	Nominal Power (Kw)	Nominal Power (HP)	Voltage (V)	RPM	Rated Frequency (Hz.)	Machine weight (kg) Approx.	Suitable Single Phase 230 VAC, 50 Hz, KEB drive
GH04 200 032	300	4	0.32	2:1	4	6	200	5	1.4	1.9	230	60	6	90	1.5 kW

Encoder SinCos / Hengstler S21 OR Equivalent
5 VDC 2048 PPR

IMPORTANT NOTES :

- Roping - 2:1 • Static Load - 1000Kg (Max.), • Shaft Efficiency - 85%, • Duty Cycle - S3-40%, • Start /Day - 150 • Brake Voltage - 220/110 VDC, • Car Weight (Kg) ≤ 500





JE ENGINEERING

EDATHINATTU BUILDING

MANthurUTHY PO

KARUKACHAL

KOTTAYAM

KERALA - 686542

EMAIL:- info@jeengineering.org

WEB: - www.jeengineering.org

PHONE:- 04812416555